

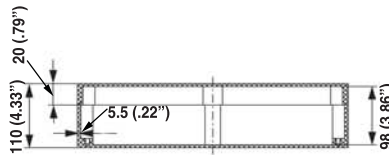
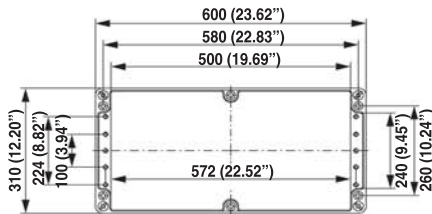
(ALA) 310 x 600 x 110 mm (12.20" x 23.62" x 4.33")



Aluminium	Part Number
Grey	3.150.0660.06

Assembly and machining services of your enclosures are available upon request. Drawings with additional dimensions can be furnished upon request.

Accessories	Part Number
Mounting plate, yellow passivated steel	3.150.0577.38
DIN Rail, DIN 32	3.150.0572.71
DIN Rail, DIN 35	3.150.0571.65



Cover screws and assembly screws are included.



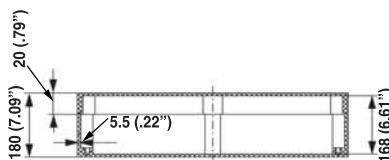
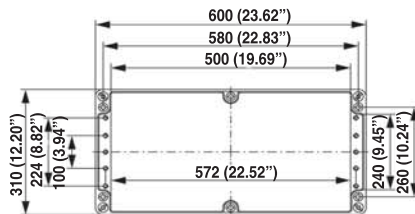
(ALA) 310 x 600 x 180 mm (12.20" x 23.62" x 7.09")



Aluminium	Part Number
Grey	3.150.0660.13

Assembly and machining services of your enclosures are available upon request. Drawings with additional dimensions can be furnished upon request.

Accessories	Part Number
Mounting plate, yellow passivated steel	3.150.0577.38
DIN Rail, DIN 32	3.150.0572.71
DIN Rail, DIN 35	3.150.0571.65



Cover screws and assembly screws are included.

